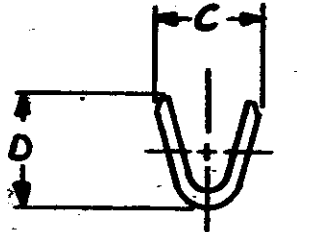
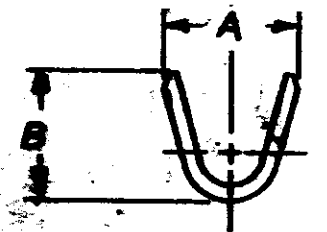
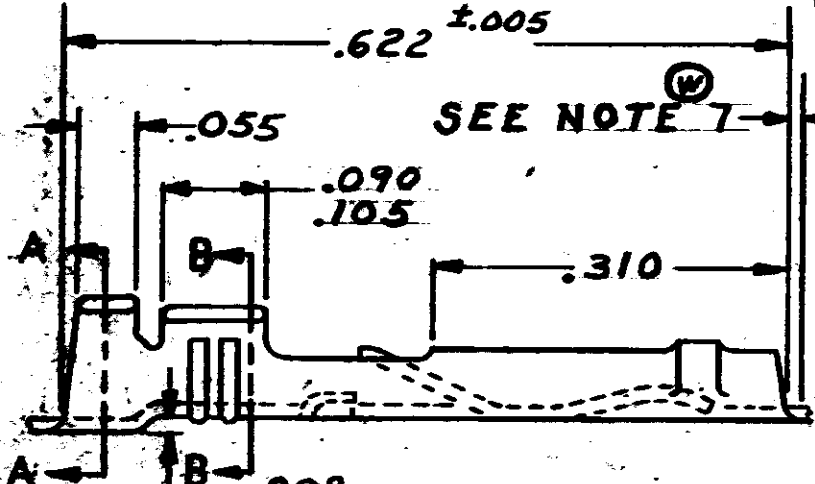
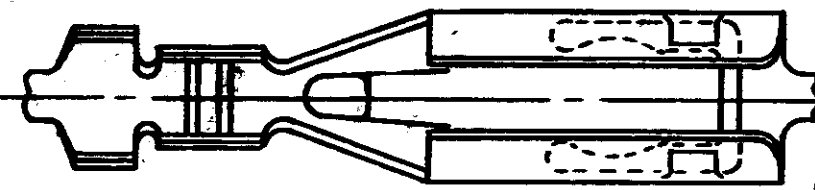


© 1962 BY AMP INCORPORATED. ALL RIGHTS RESERVED. AMP PRODUCTS COVERED BY PATENTS AND/OR PATENTS PENDING.

NOTE:

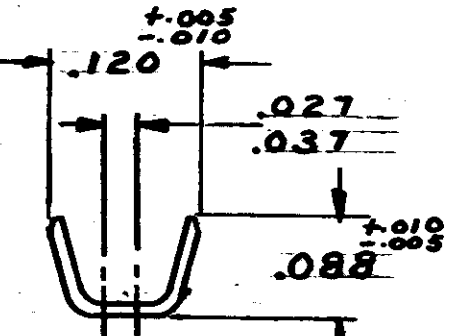
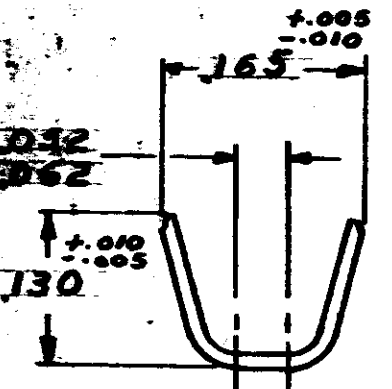
1. FOR CRIMPING INFORMATION SEE ENGR. SPEC. 108-9, 201.
2. AFTER ASSEMBLY INTO AND EXTRACTION FROM RECEPTACLE HOUSING THIS DIM. MAY GO TO A MIN. OF .050.
3. FOR SUPPLEMENTAL SPECIFICATIONS SEE 108-9, 004.
4. .000030 GOLD OVER .000030 NICKEL.
5. .000050 GOLD OVER .000030 NICKEL.
6. .000100 GOLD OVER .000030 NICKEL.
7. CUT-OFF TAB FOR LOOSE PIECE PARTS IS .005-.020 BOTH FRONT AND REAR.

| REVISIONS | | | | |
|-----------|------|-----------------------------|-----------|--------------------|
| SYM | ZONE | DESCRIPTION | DATE | APPROVAL |
| S | | REDRAWN AND REVISED | V-488 | 9-17-64 M.S./ASH |
| T | | REVISED SHT. 1 & ADD SHT. 2 | V-757 | 12-28-64 M.S./D.H. |
| V | | REVISED SHT. 1 & 2 | Y-278 | 3-16-66 M.S./D.H. |
| W | | REVISED SHT. 1 | Y-320 | 4-6-66 M.S./D.H. |
| W1 | | REVISED SHT. 1 & 2 | 2784 M.S. | 12-3-70 D.H. |
| W2 | | REVISED SHT. 2 | 4433 M.S. | 4-24-75 |
| W3 | | REVISED | 6869 D.C. | 9-8-80 |



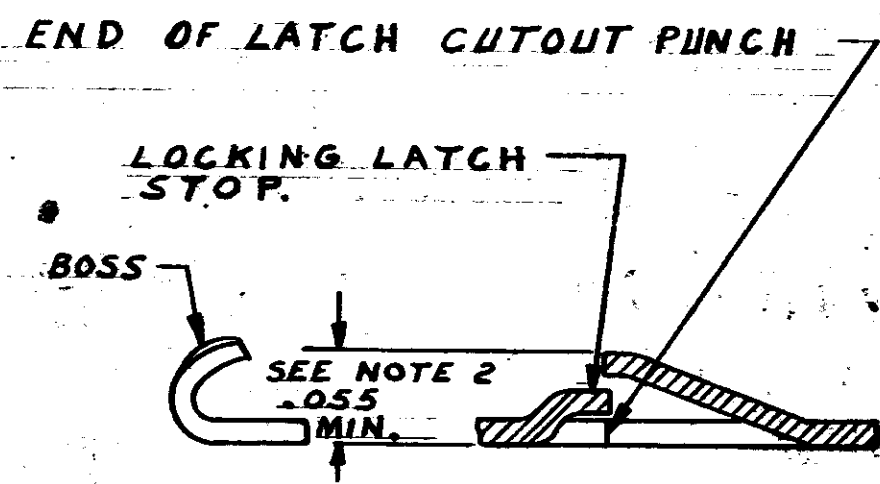
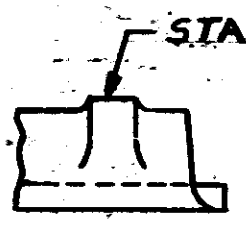
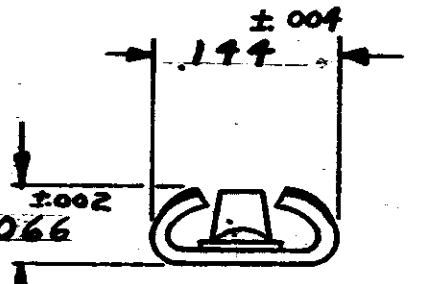
SECT. A-A

SECT. B-B



SECT. A-A (FOR 66021-2 ONLY)

SECT. B-B (FOR 66021-2 ONLY)



AMP INFO
LOC PRINT DIST
AR 39

| QTY REQD | NOMENCLATURE OR DESCRIPTION | PART OR IDENTIFYING NO. |
|----------|-----------------------------|-------------------------|
|----------|-----------------------------|-------------------------|

LIST OF MATERIALS OR PARTS LIST

| OTHERWISE SPECIFIED | SIGNATURE | DATE |
|-------------------------------------|----------------------|----------|
| FRACTIONS ± # | <i>M. Smith</i> | 10-9-64 |
| DECIMALS ±.010 | <i>D.S. Heide</i> | 11/16/64 |
| ANGLES ± # | <i>R. Sloman</i> | 10/11/64 |
| MATERIAL | <i>R. Hillis day</i> | 11/16/64 |
| OTHER TREAT | | |
| GOLD OVER NICKEL (REF. NOTES 4 & 5) | | |

| | | | |
|-------------------------|------|--|--------------|
| AMP TRADEMARK | | AMP INCORPORATED HARRISBURG, PENNSYLVANIA | |
| AMP BLADE RECEPTACLE | | | |
| CODE IDENT NO | SIZE | NUMBER | |
| 00779 | B | 66005 | |
| BY | CALC | ACTUAL | SHEET 1 OF 1 |

AMP INCORPORATED. ALL RIGHTS RESERVED. AMP PRODUCTS COVERED BY PATENTS AND/OR PATENTS PENDING. APPROVED PER GOVT CONTRACT NO.

| REVISIONS | | | | |
|-----------|------|-------------|------|----------|
| SYM | ZONE | DESCRIPTION | DATE | APPROVAL |
| W3 | | | | |

| | | | | | | | | | | |
|----------|------------------------|------------------------|------------------------|------------------------|--------------|-------------------|------------|----------------|--------------------|-------------------|
| 66021-4 | # | # | # | # | 2*22 OR 2*20 | 2(.045-.072) DIA. | SEE NOTE 6 | 66026-4 | | |
| 66027-3 | .125 | .125 | .075 | .060 | 28-24 AWG. | SPECIAL | SEE NOTE 5 | 66029-3 | | |
| 66027-2 | .125 | .125 | .075 | .060 | 28-24 AWG. | SPECIAL | SEE NOTE 4 | 66029-2 | 66154-1 | 66158-1 |
| 66021-3 | # | # | # | # | 2*22 OR 2*20 | 2(.045-.072) DIA. | SEE NOTE 5 | 66026-3 | | |
| 66021-2 | # | # | # | # | 2*22 OR 2*20 | 2(.045-.072) DIA. | SEE NOTE 4 | 66026-2 | 66153-1 | 66157-1 |
| 66009-3 | .100 | .090 | .075 | .060 | 28-24 AWG. | .030-.060 DIA. | SEE NOTE 5 | 66011-3 | | |
| 66009-2 | .100 | .090 | .075 | .060 | 28-24 AWG. | .030-.060 DIA. | SEE NOTE 4 | 66011-2 | 66152-1 | 66156-1 |
| 66005-3 | .120 | .111 | .090 | .080 | 24-20 AWG. | .040-.080 DIA. | SEE NOTE 5 | 66010-3 | | |
| 66005-2 | .120 | .111 | .090 | .080 | 24-20 AWG. | .040-.080 DIA. | SEE NOTE 4 | 66010-2 | 66151-1 | 66155-1 |
| PART NO. | A $\pm .003$ - .010 | B $\pm .010$ - .008 | C $\pm .003$ - .010 | D $\pm .010$ - .008 | WIRE RANGE | INS. RANGE | FINISH | LOOSE PC. P/N. | STRIP P/N Δ | L.P. P/N Δ |

A. 000015 GOLD OVER .000030
MIN. NICKEL

| AMP INFO | QTY RECD | NOMENCLATURE OR DESCRIPTION | PART OR IDENTIFYING NO. | MATERIAL AND PLATING |
|---------------------------------|----------|-----------------------------|-------------------------|----------------------|
| LOC: <u>AR 39</u> | | | | |
| LIST OF MATERIALS OR PARTS LIST | | | | |
| SIGNATURE | | DATE | | |
| OR <u>M. Smith</u> | | 12-29-64 | | |
| CHK <u>J.S. Wade</u> | | 12/29/64 | | |
| DESIGN ENGR | | | | |
| <u>R. Sloman</u> | | 12/29/64 | | |
| OTHER APPR | | | | |
| OTHER APPR | | | | |
| GOLD OVER NICKEL | | CODE IDENT NO | SIZE | NUMBER |
| REF NOTES 4 & 5 | | 00779 | B | 66005 |
| SHEET 1 | | CUST. DRAWING | | |